

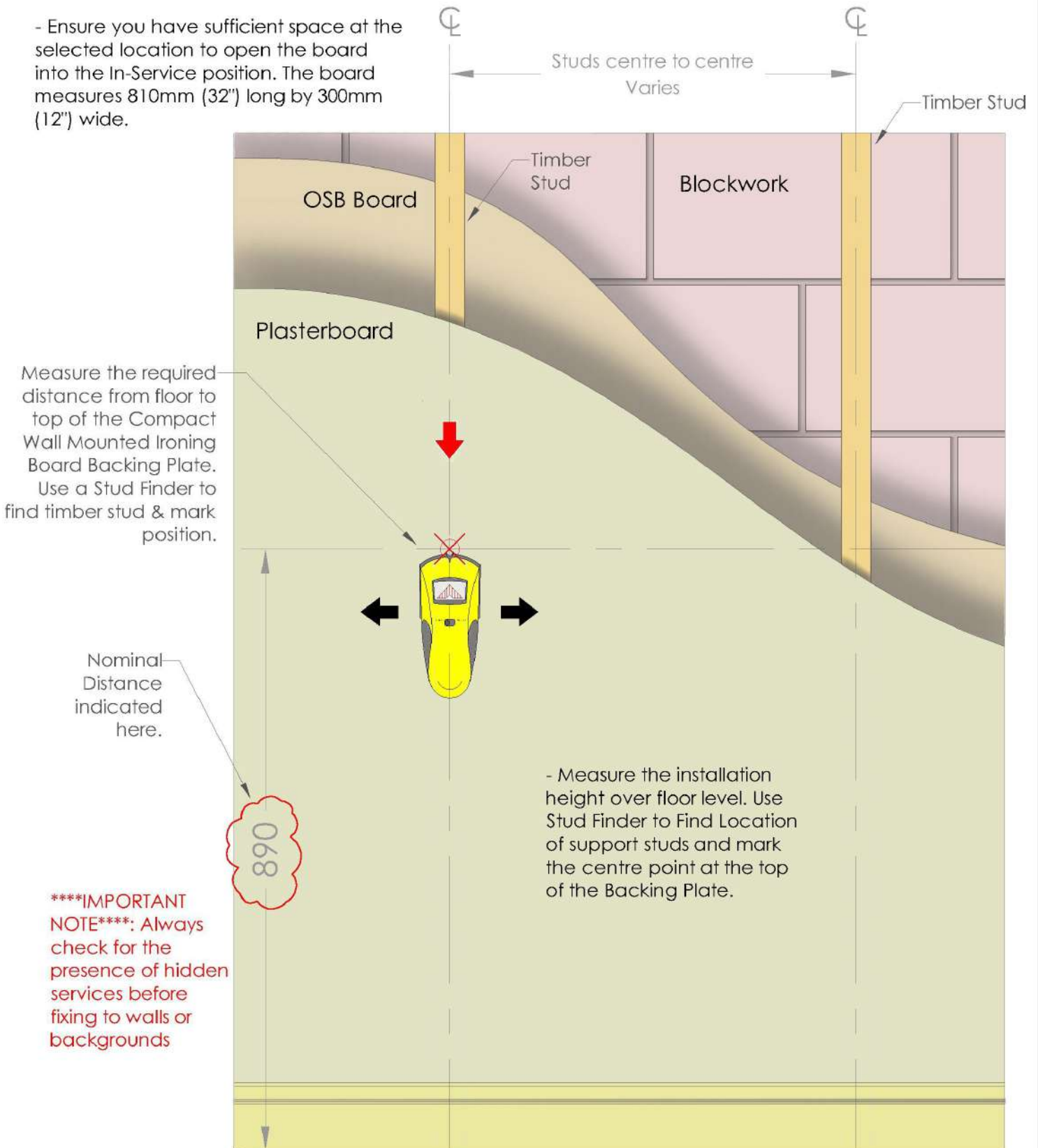


## Compact Wall Mounted Ironing Board

### Installation Instructions

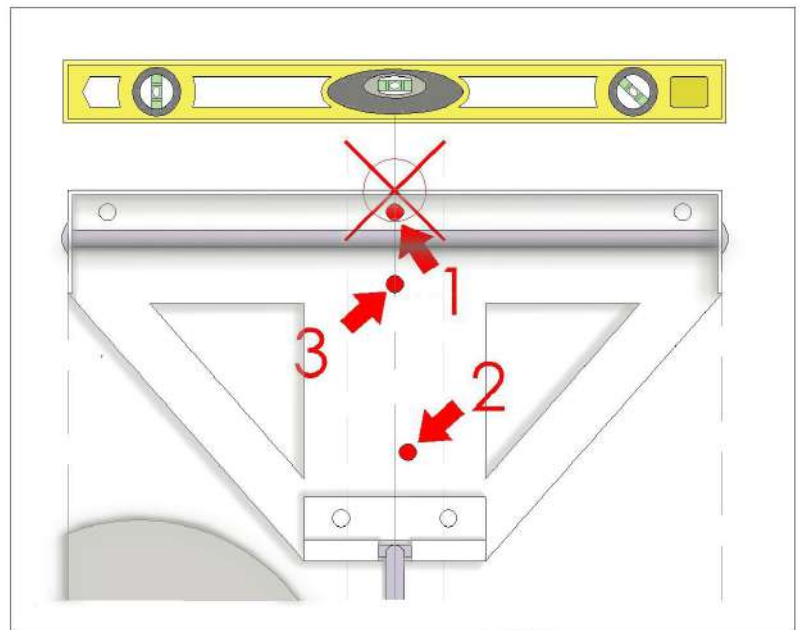
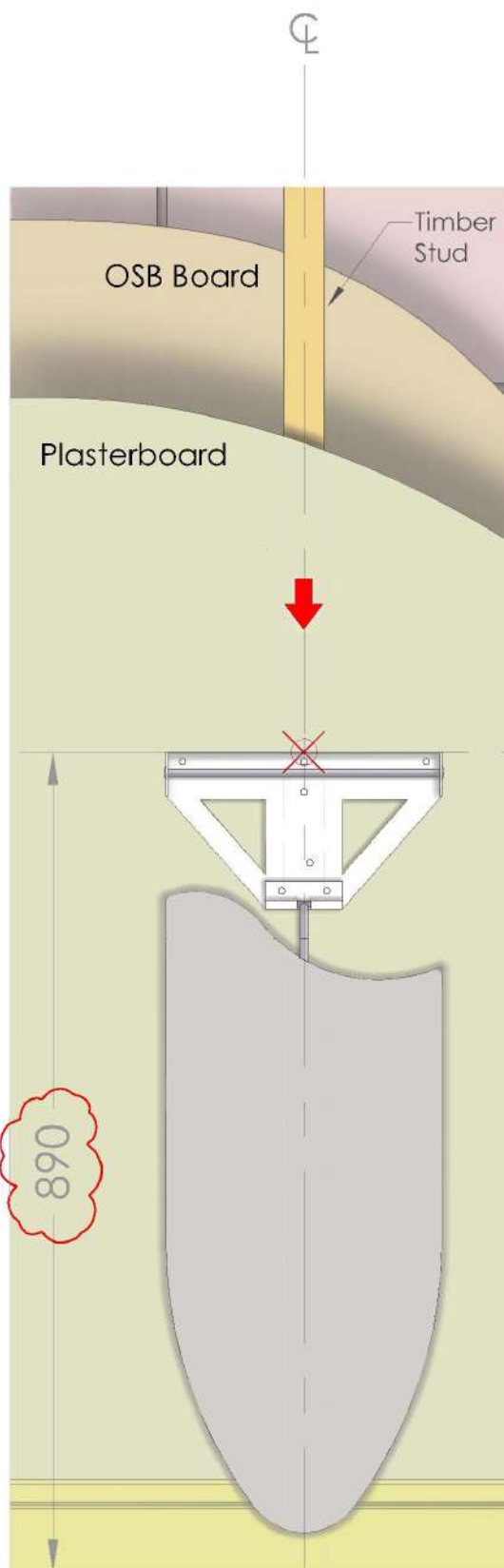
## Timber Frame Installation

- The Compact Wall Mounted Ironing Board should be installed at a height that suits you and where it is easy to access. Always check the location selected for hidden services in walls or fixing backgrounds.
- Determine the desired Ironing Board height above floor according to personal preference - **\*\*Note:** The average height of an Ironing Board is 890mm (35") from the floor.
- Ensure you have sufficient space at the selected location to open the board into the In-Service position. The board measures 810mm (32") long by 300mm (12") wide.



**\*\*\*\*IMPORTANT NOTE\*\*\*\*:** Always check for the presence of hidden services before fixing to walls or backgrounds

## Timber Frame Installation



- Position Compact Wall Mounted Ironing Board on wall to match the centre point marked from Step 1. Mark position for hole no.1.

- Pre-drill hole no.1 using 3mm ( $\frac{1}{8}$ " ) diameter drill bit to a depth of 50mm (2").

- Return and hold Compact Ironing board in fixing position and install fixing screw into hole 1 indicated above until the backing plate is snug to the wall.

- Place spirit level across backing plate and rotate plate and board around Screw 1 (installed earlier) until fully level.

- Hold firmly in place and pre-drill hole no.2 using 3mm ( $\frac{1}{8}$ " ) drill bit to a depth of 50mm (2"). Install fixing screw into hole location 2, adjust level as necessary to ensure backing plate is level before tightening screw fully.

- Pre-drill hole no.3 using 3mm ( $\frac{1}{8}$ " ) drill bit to a depth of 50mm (2") and install fixing screw into hole location 3.

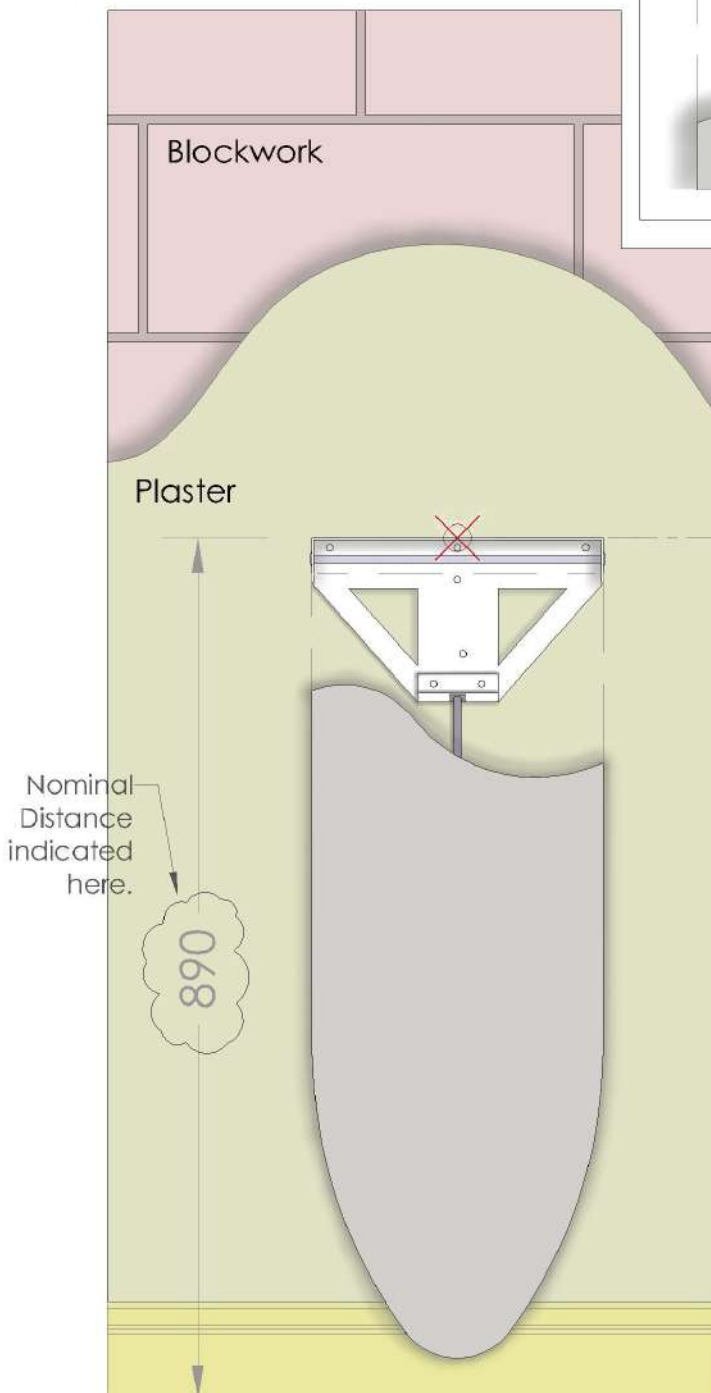
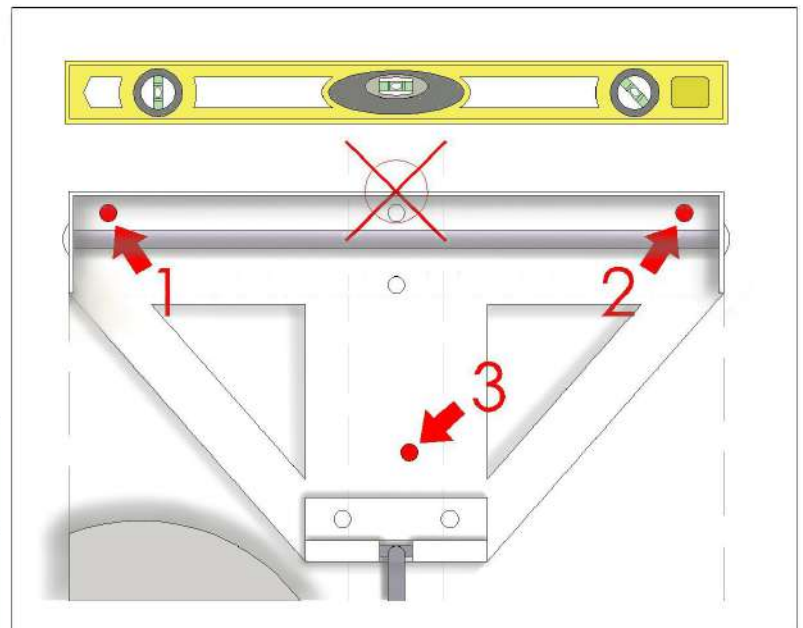
\*\*\*\*NOTE\*\*\*\*: Use Phillips Head Screws supplied for Timber Frame installations.



## Block/Concrete Wall Installation

- The Compact Wall Mounted Ironing Board should be installed at a height that suits you and where it is easy to access. Always check the location selected for hidden services in walls or fixing backgrounds.

- Determine the desired Ironing Board height above floor according to personal preference - **\*\*Note: The average height of an Ironing Board is 890mm (35") from the floor.**



- Position Compact Wall Mounted Ironing Board on wall to match the centre point marked from Step 1. Mark position for hole no.1.

- Pre-drill hole no.1 using 6mm diameter drill bit to a depth of 65mm.

- Return and hold Compact Ironing board in fixing position and install fixing screw into hole 1 indicated above until the backing plate is snug to the wall.

- Place spirit level across backing plate and rotate plate and board around Screw 1 (installed earlier) until fully level.

- Hold firmly in place and pre-drill hole no.2 using 6mm drill bit to a depth of 65mm. Install fixing screw into hole location 2, adjust level as necessary to ensure backing plate is level before tightening screw fully.

- Pre-drill hole no.3 using 6mm drill bit to a depth of 65mm and install fixing screw into hole location 3.

**\*\*\*\*NOTE\*\*\*\*:** Use HUS 60 Torx Head Screws supplied for Blockwork or Concrete walls installations.